

AN AMERICAN ORIGINAL SINCE 1913

**Schott**<sup>®</sup>  
N.Y.C.



FALL/WINTER  
2019 LOOKBOOK





Irving and Michael Schott in the factory, 1975

Every item that bears the Schott name is crafted with the same care and attention to detail that my great grandfather, Irving Schott, strived for when he created the very first jacket that carried our name on its label more than 100 years ago.

These time honored manufacturing techniques have been passed through four generations of the Schott family to ensure that we continue to set the standard for durable and timeless outerwear. Schott NYC is recognized worldwide for its high quality, craftsmanship and authentic American styling.

*Jason Schott*

JASON SCHOTT  
4<sup>TH</sup> GENERATION, COO



**PER41**

25" heavyweight, vegetable tanned,  
hand-vintaged cowhide café racer jacket.  
USA. \$1,075

## WORN IN CLASSICS THAT FEEL AS FAMILIAR AS AN OLD FRIEND



**PER28**

26" heavyweight, vegetable tanned, hand-vintaged  
cowhide 1928 inspired D-pocket jacket. USA. \$1,035



**PER70**

26" heavyweight, vegetable tanned, hand-vintaged  
cowhide slim fit Perfecto® jacket. USA. \$1,150



## NATURALLY COOL

**246**

26" lightweight waxy lambskin delivery jacket  
with bi-swing back. USA. **\$820**

Also shown: **SW1932** (pg. 17)



**546**

26" lightweight naked waxy cowhide delivery  
jacket with bi-swing back. USA. **\$915**



**582**

26" lightweight oiled cowhide unlined  
trucker jacket. USA. **\$720**



## RUGGED AMERICAN STYLING



**545**

26" waxy naked buffalo trucker jacket with  
sheepskin collar, pile lining. USA.  
(Black, Sycamore) \$845

**Also shown:**

**A515** (pg. 27)

**A500A** (pg. 27)



**375**

26" midweight rough-out cow suede  
unlined trucker jacket. USA. \$700



**584**

27" lightweight waxy natural pebble  
cowhide flight jacket. USA. \$825



**581**

26" lightweight oiled cowhide  
unlined café racer jacket. USA. \$695





### 2B3

28" midweight plush sheepskin military B-6 bomber jacket. USA.  
(Brown, Black) \$1,360

### 265SW

29" oversized sheepskin B-3 jacket with removable belt. USA. \$1,385



### 247SW

24" sheepskin military B-3 bomber jacket. USA. \$970

## PLUSH SHEEPSKIN JACKETS



### 521W

25.5" sheepskin jacket with lambskin sleeves and removable belt. USA.  
(Black, Off White) \$1,120



## WARM UP ON COOL NIGHTS

**219D**

28" down-filled lambskin puffer jacket with sheepskin collar. USA.  
\$1,185



## A NEW TAKE ON AN OLD FAVORITE

**G1SC**

27" heavyweight lambskin G-1 flight jacket with detachable sheepskin collar. Imported.  
(Navy, Red, Burgundy, Olive) \$850





**2906W**

21" lightweight lambskin collared moto jacket with detachable belt. Imported. \$495

## KEEP IT CLASSIC

Sleek new leather jackets that go everywhere



**503W**

23" lightweight waxy cowhide asymmetrical moto jacket. USA \$640



**2907W**

22.5" lightweight lambskin collared jacket. Imported. \$435



**2909W**

26" long lightweight lambskin asymmetrical moto jacket. Imported. \$495



# THE ULTIMATE LAYER

Wear alone as a shirt jacket or  
under your favorite outerwear

## 7911P

30" 20 oz. glenn plaid wool blend  
unlined CPO shirt. Imported.

**\$140**

**Also shown:** TEE2 (pg. 26)

BLT1 (pg. 27)



## 7910P

30" 20 oz. check plaid wool blend unlined CPO shirt.  
Imported. **\$140**



## 7810

30" 20 oz. wool blend unlined CPO shirt. Imported.  
(Black, Olive, Red, Orange, Blue, Grey) **\$120**



## COZY CREWNECKS



### SW1936

Lightweight wool blend ribbed crewneck sweater.  
80/20 wool/nylon. Imported.  
(Burgundy, Black, Navy, Sage) **\$95**



### 734

41" 24 oz. herringbone wool blend  
single breasted overcoat. USA. **\$475**

### SW1932

Lightweight triple blend crewneck sweater  
with roll edge detail. Imported.  
(Cloud, Charcoal, Navy) **\$100**

**Also Shown:** A500A (pg. 27)





**8934**

Also shown: TEE2 (pg. 26)

## VERSATILE UTILITY



**8934**

29" waxed cotton chore jacket with corduroy trim, buffalo check blend lining. Imported. (Left page) \$250



**8936**

32" waxed cotton countryman jacket with corduroy trim, cotton lining. Imported. \$238



**8939**

28" waxed cotton deck jacket with faux pile collar and lining. Imported. (Khaki, Olive) \$238







**SW1921**

## A FRESH TAKE ON TRIED AND TRUE FAVORITES



**SW1924**

Midweight mixed yarn cotton  
shawl collar cardigan. Imported. **\$118**



**SW1921**

Midweight mixed yarn cotton crewneck  
sweater with roll edge detail. Imported.  
(Multi, Navy: Left page) **\$80**



**SW1922**

Midweight mixed yarn cotton  
zip front cardigan. Imported. **\$100**



## MODERN HERITAGE

Rugged on the outside and cozy on the inside



### F1958

26" heavyweight wool blend  
sweater jacket, sherpa lining.  
80/20 wool/nylon. Imported. \$190

## READY FOR WHATEVER ADVENTURE AWAITS



### 9926D

30" nylon down filled hooded  
parka with waterproof tape  
zipper pockets, detachable  
faux fur trim. Imported.  
(Olive, Black, Orange) \$340



## AUTHENTIC MILITARY DETAILS



**7924**

27" 20 oz. wool blend polyfill  
bomber jacket with faux fur collar,  
quilted sleeves, orange nylon lining.  
Imported. \$250



**7920**

28" 20 oz. wool blend reversible liner,  
quilted polyfill lining. Imported.  
(Black, Olive) \$215



## NOT SO BASIC BASICS

### SHORT SLEEVE 100% COTTON TEES



**TUNLKY1**  
\$36



**TDIRT1**  
\$36



**TRIDE1**  
\$36



**TYCDB2**  
\$36



**TEE2**  
Heavyweight pocket tee \$45



**TLOGO**  
\$36

### LONG SLEEVE 100% COTTON TEES



**LS2**  
Pocket Tee  
\$60



**LSSLV1**  
\$70



**LSPER1**  
(Black, Off White)  
\$70



**LSUM1**  
\$70

## MADE RIGHT HERE IN THE USA

### BLT1

1.5" heavyweight Horween® steerhide  
(Luggage, Black, Brown) \$75



### BLT2

1.5" heavyweight Horween® steerhide  
(Black, Luggage, Brown) \$75



### BLT71

1.5" heavyweight cowhide  
(Luggage, Black, Brown) \$75



### BLT81

1.5" heavyweight Horween® steerhide  
(Brown, Black, Luggage) \$75



### BLT91

1.25" Horween® steerhide  
(Black, Luggage, Brown) \$75



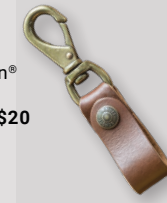
### A501

4" heavyweight Horween®  
steerhide keychain.  
(Black, Luggage, Brown) \$20



### A502

6" heavyweight Horween®  
steerhide keychain.  
(Luggage, Brown, Black) \$25



### A515

100% wool military watch cap.  
(Black, Navy, Olive, Coyote, Brown) \$25



### A500A

100% acrylic rib-knit watch cap.  
(Orange, Red) \$25



# VISIT OUR STORES

## NEW YORK

### NOLITA

236 Elizabeth St.  
New York, NY 10012  
212-219-1636

### HOURS

Mon-Sat 11-7  
Sun 12-6



## SAN FRANCISCO

### JACKSON SQUARE

619 Sansome St.  
San Francisco, CA 94111  
415-658-7229

### HOURS

Mon-Sat 11-7  
Sun 10-6



## CHICAGO

### WICKER PARK

1509 N. Milwaukee Ave.  
Chicago, IL 60622  
773-799-8250

### HOURS

Mon-Sat 11-7  
Sun 12-6



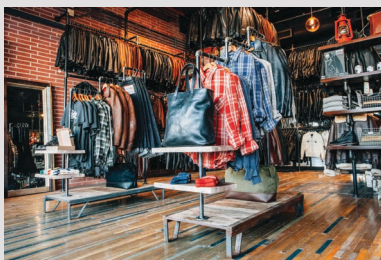
## LOS ANGELES

### LA BREA

101 S La Brea Ave.  
Los Angeles, CA 90036  
323-424-3934

### HOURS

Mon-Sat 11-7  
Sun 12-6



SchottNYC.com  
1-800-631-5407  
@SchottNYC



To sign up for email updates about our limited releases, updates, and discounts please visit [SchottNYC.com/shop](http://SchottNYC.com/shop)

Prices listed reflect XS-XXL sizes. Extended sizes incur additional price increase. All prices subject to change.